



August 10, 2022

Dear Neighbor,

Kerr McGee Oil & Gas Onshore, LP, a subsidiary of Oxy USA Inc, is preparing to submit an application for a Weld County Oil and Gas Location Assessment (WOGLA) for a project in your community. We are committed to being good neighbors by providing frequent and transparent information, seeking the community's feedback, safeguarding the environment, and protecting the health and safety of employees and communities.

Description of the project

The proposed Labrisa 11-35HZ project, as described in the following pages in more detail, consists of ten oil and natural gas wells and a production facility. The timeline for development is based on obtaining the required permits and drilling rig availability. At this time, we estimate that drilling will start sometime between October and December 2023. However, we commit to keeping you updated throughout the permitting process and providing a detailed timeline before beginning construction. You can find project updates at oxycoloradostakeholder.com/project-updates.

Standard practices and mitigation strategies

Our standard practices align with the guidelines of the Colorado Oil and Gas Conservation Commission (COGCC) and the Colorado Department of Public Health and Environment. In addition, we carefully planned the development and mitigation techniques for this location to ensure the temporary impacts are minimized as much as possible. Mitigations during development include a robust traffic management plan, installation of sound walls, and continuous sound and air monitoring.

Our team members will continue to work diligently to plan construction and operations with you in mind. We welcome your feedback and can be contacted at any time for questions and comments by email, phone, or mail. In addition, we will consider all reasonable mitigation measures proposed to minimize adverse impacts of the proposed oil and gas location.

Next steps

This project must undergo a comprehensive permitting process at both the local and state level. We will keep our website updated, and you will be notified by mail at many steps throughout the process. Please reach out to us or Weld County to discuss this project or to set up a meeting. We look forward to working with you.

Oxy Stakeholder Relations

1099 18th Street, Suite 700

Denver, CO 80202

866.248.9577

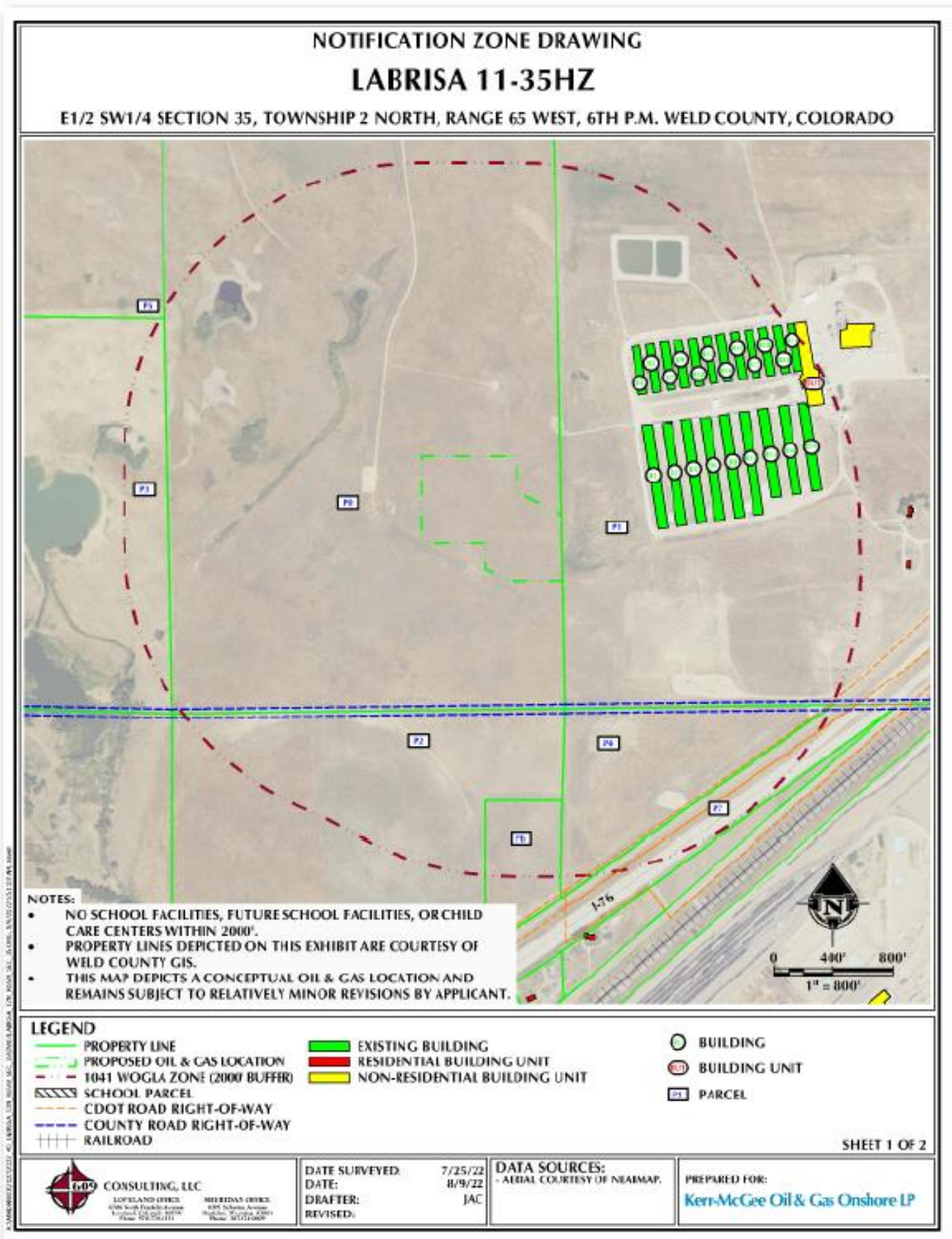
ColoradoStakeholder@oxy.com

www.OxyColoradoStakeholder.com

New Energy Development



Project Location



ID	BUILDING UNIT NUMBER	BUILDING UNIT DISTANCE	BUILDING NUMBER	BUILDING DISTANCE	PARCEL #	OWNER	MAILING ADDRESS	MAIL CITY	MAIL STATE	MAIL ZIP
P0	-	-	-	-	130735000002	SPARBOE FARMS INC	PO BOX 309	LITCHFIELD	MN	553550309
P1	BU1	±1811' NE	B1, B2, B3, B4, B5, B6, B7, B8, B9, B10, B11, B12, B13, B14, B15, B16, B17, B18, B19, B20, B21	±626' E, ±757' E, ±888' E, ±919' NE, ±1010' NE, ±1016' E, ±1104' NE, ±1147' E, ±1181' NE, ±1256' NE, ±1279' E, ±1337' NE, ±1413' E, ±1419' NE, ±1505' NE, ±1549' E, ±1587' NE, ±1676' NE, ±1687' E, ±1762' NE, ±1845' NE,	130735000003	M G WALDBAUM CO. C/O SPARBOE SUMMIT FARMS	23577 MINNESOTA HIGHWAY 22 PO BOX 309	LITCHFIELD	MN	553555841
P2	-	-	-	-	147302000024	ROCKYS AUTOS INC	6350 FEDERAL BLVD	DENVER	CO	802212008
P3	-	-	-	-	130734000016	ROCKYS AUTOS INC	6350 FEDERAL BLVD	DENVER	CO	802212008
P4	-	-	-	-	147302000012	JOHN L & JUDITH A MCGILL	PO BOX 387	HUDSON	CO	806420387
P5	-	-	-	-	130734100018	SPARBOE FARMS INC	PO BOX 309	LITCHFIELD	MN	553550309
P6	-	-	-	-	147302000014	RENTCO LLC	PO BOX 187	HUDSON	CO	806420187
P7	-	-	-	-	-	COLORADO DEPARTMENT OF TRANSPORTATION	10601 W. 10TH ST.	GREELEY	CO	80634

Pad Name	Parcel #	Location	Disturbed Acreage	Operation Acreage
Labrisa 11-35HZ 10 wells	130735000002	NE/4 SW/4 Section 35, 2N, 65W, 6th P.M.	13.5 acres (During Development)	3.4 Acres (For life of wells)

Our Commitment To You

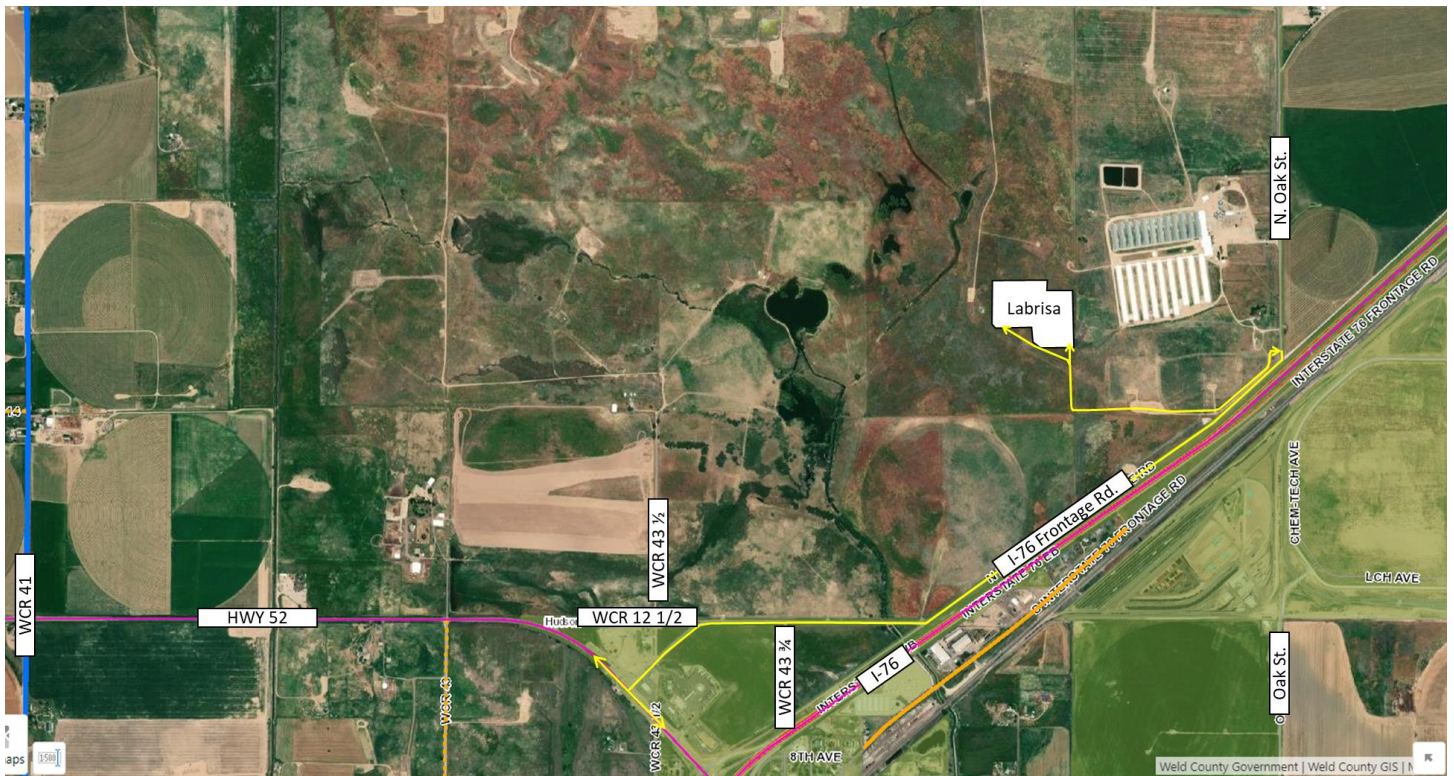
Our Best Practices and Mitigation Measures



Traffic Management Plan

One part of the comprehensive permitting process is developing a traffic management plan. This includes specific routes for all traffic coming to and leaving the proposed project locations. To access the locations, drivers will use N. Oak St. Speed limits will be reduced to 10 mph on the access road and 5 mph once vehicles reach the well pad/facility.

We reduce traffic as much as possible through oil transfer and Water-On-Demand systems. The oil produced is transported off-site through a pipeline. In addition, we transport the water used in hydraulic fracturing through our innovative Water-On-Demand pipeline system to reduce traffic further. Since its inception in 2012, this system has enabled us to eliminate 60 million miles of truck traffic from Weld County roads. Doing so has reduced emissions, dust, road wear, and inconvenience to our neighbors. This system also reduces our surface footprint by eliminating water storage tanks. At this location, we estimate that the Water-On-Demand system will eliminate over 51,000 truck trips.





Phases of Energy Development

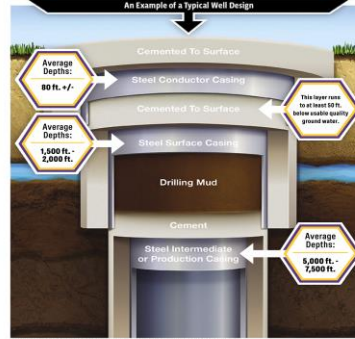
For more information, please see www.OxyColoradoStakeholder.com/Oil-and-Gas-101

1 Pad Construction 30-45 days per pad



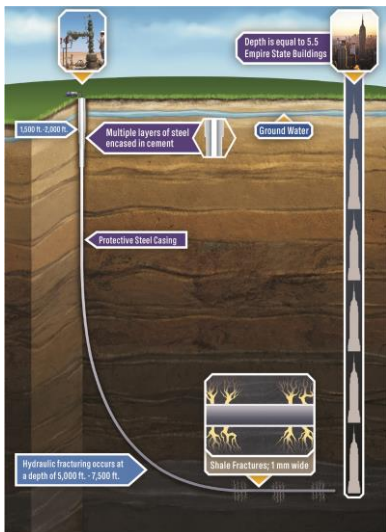
Standard construction equipment prepares the well site. A wall may be installed to reduce or minimize noise and light during development.

2 Surface Casing Set 1-2 days per well



A drilling rig begins the underground construction process by installing steel pipe and cement (surface casing) to protect groundwater. Surface casing is set at least 50' below the aquifer, which is typically about 1,000' below the surface.

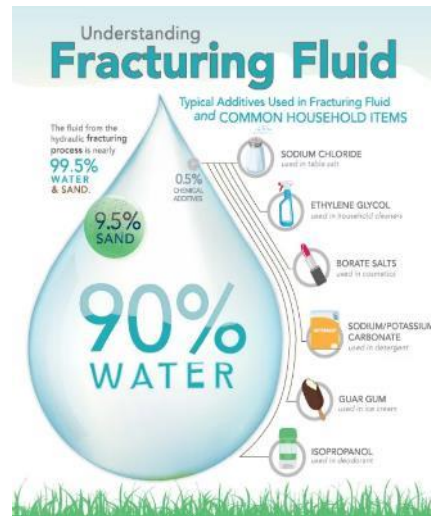
3 Horizontal Drilling 4-6 days per well



A production rig arrives and drills to a depth of 7,000 to 8,000 feet. The horizontal portion of the wellbore can extend more than two miles.

Additional layers of protective steel casing and cement are installed.

4 Well Completions: 3 Components 6-9 days per well



Hydraulic Fracturing: a safe, highly engineered technology developed in the 1940s. Fracturing fluid is pumped under high pressure down the wellbore to create hairline fractures in the rocks over a mile below the earth's surface.

Flowback: After fracturing, the wells are opened and oil and gas flows into the mobile production facility.

Well clean-out and Tubing: We clean-out the wells to remove excess sand and install the production tubing.

5 Production Facility Construction 30-45 days per facility



Production facilities are constructed adjacent to the wells to collect and separate the oil, natural gas and water that are produced. Facility production is 30-45 days of work done in stages over a period of about four months.

6 Reclaim Well Site 30 days per pad



Once development phases are complete, the pad is reclaimed to the largest extent possible to match the existing landscape. Each well will produce energy vital to the health and welfare of our communities or decades to come.

Contacts



OXY Occidental

Colorado Response Line

1.866.248.9577
ColoradoStakeholder@oxy.com



Margaret Hess
Stakeholder Relations
1099 18th Street, 7th Floor, Denver, CO 80202
Coloradostakeholder@oxy.com
www.OxyColoradoStakeholder.com

Oxy Integrated Operations Center (IOC)
970.515.1500
Real-time monitoring of wells, water tanks,
and production facilities
24 hours a day, 365 days a year



Weld County
Jason Maxey
1301 N. 17th Ave. Greeley, CO 80631
970.400.3580 | oged@weldgov.com



Colorado Oil and Gas Conservation Commission
303.894.2100
www.cogcc.state.co.us