

May 26, 2023



Dear Neighbor,

We are writing to notify you that Kerr McGee Oil & Gas Onshore, LP, an Oxy USA Inc. subsidiary, will soon begin the next phases of developing oil and natural gas wells within 2,000 feet of your home or property. In our commitment to being a good neighbor, we provide frequent and transparent information, seek community feedback, safeguard the environment, and protect the health and safety of employees and communities.

Work activity, location, and schedule

Enclosed, you will find information about the phases of energy development and our well locations. Please visit our website for more information on oil and natural gas development.

Below is a summary of the planned work and the estimated schedule.

Phase	Work Activity	Estimated Start	Estimated End
1-3	Construction, Casing, and Drilling	Completed	
4	Well completions	Early July, 2023	Early October, 2023
5	Facility Construction	Late March, 2023	Mid-July, 2023
6	Interim Reclamation	Early January, 2024	Early October, 2024
Interim Reclamation is an estimated 60-day noncontinuous period of operation. The time frame above is an estimation of when the operation is likely to take place.			

For up-to-date information on timing, please visit www.OxyColoradoStakeholder.com/project-updates

Standard practices and mitigation strategies

Our standard practices align with the guidelines of the City of Greeley, the Colorado Oil and Gas Conservation Commission (COGCC), and the Colorado Department of Public Health and Environment. We carefully planned this location's development and mitigation techniques to minimize any temporary impacts from our operations. Currently, mitigations during development include a robust traffic management plan and continuous sound and air monitoring.

To access the most up-to-date information on current projects, please visit the "Project Updates" tab at www.OxyColoradoStakeholder.com/project-updates

Sincerely,

Oxy Stakeholder Relations

1099 18th Street, Suite 700 Denver, CO 80202

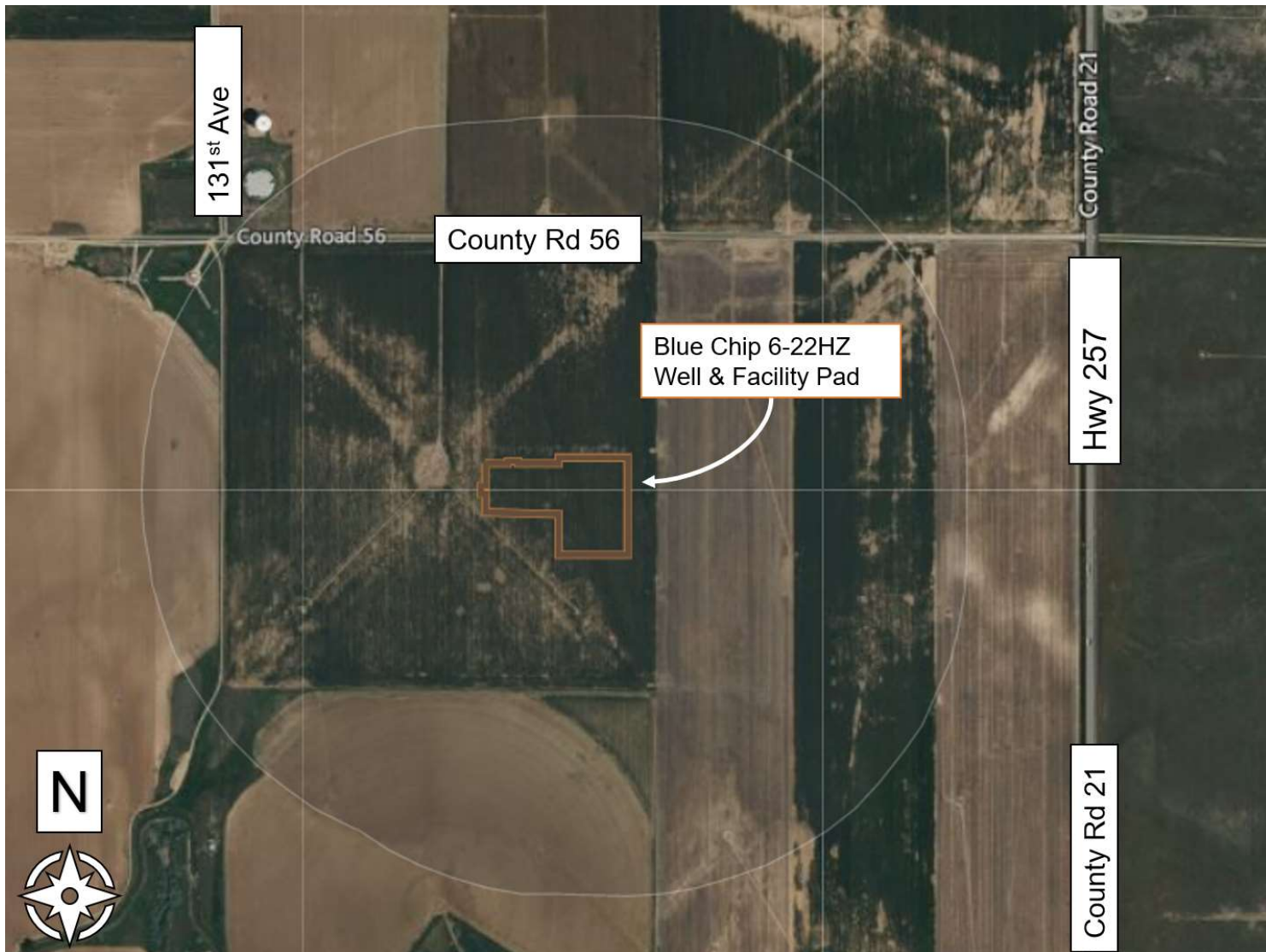
866.248.9577

ColoradoStakeholder@oxy.com

www.OxyColoradoStakeholder.com

AREA OF OPERATION

Blue Chip 6-22HZ



Location:	3/4 mile west of the intersection of Hwy 257 and CR 56
Parcel #:	095722000010
Cross Streets:	County Rd 56 & County Rd 21
Legal:	E1/2 NW1/4 SECTION 22, TOWNSHIP 5 NORTH, RANGE 67 WEST, 6TH P.M., GREELEY, COLORADO
Pad Description:	Blue Chip 6-22HZ, 12 Wells
Greeley Permit #:	USR22-0010
COGCC Permit ID:	403038033
City of Greeley Planning and Zoning:	970.350.9780 planning@greeleygov.com https://greeleygov.com/services/ognew
Colorado Oil and Gas Conservation Commission:	cogcc.state.co.us 303.894.2100

For more information on oil and natural gas development or project updates, please visit www.OxyColoradoStakeholder.com

Phases of Energy Development



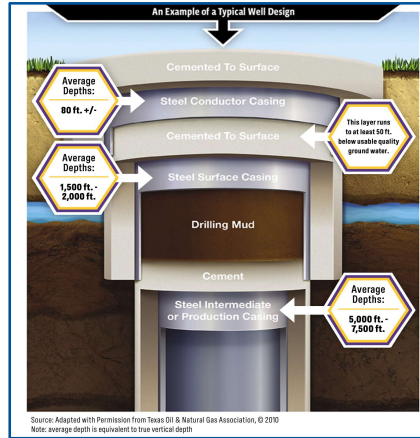
For more information, please visit www.OxyColoradoStakeholder.com/oil-and-gas-101

Pad Construction (30-45 days per pad)



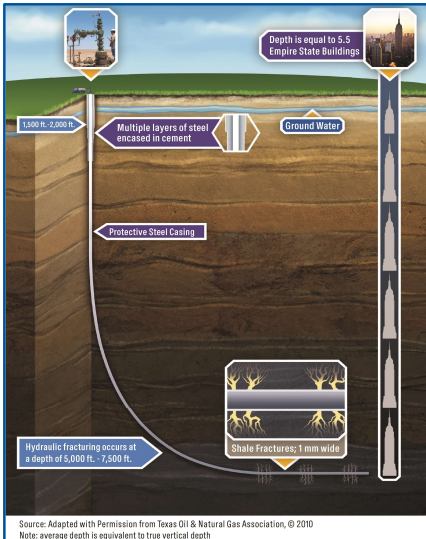
Standard construction equipment prepares the well site. A wall may be installed to reduce or minimize noise and light during development.

Surface Casing Set (1-2 days per well)



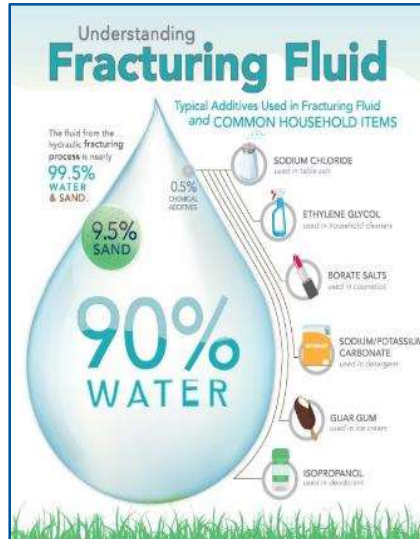
A drilling rig begins the underground construction process by installing steel pipe and cement (surface casing) to protect groundwater. Surface casing is set at least 50' below the aquifer, typically about 1,000' below the surface.

Horizontal Drilling (4-6 days per well)



A production rig arrives and drills to a depth of 7,000 to 8,000 feet. The horizontal portion of the wellbore can extend more than two miles. Additional layers of protective steel casing and cement are installed.

Well Completions (6-9 days per well)



Hydraulic Fracturing: A safe, highly engineered technology developed in the 1940s. Fluid is pumped over a mile below the earth's surface under pressure to create hairline fractures in the rocks.

Flowback: After fracturing, the wells are opened, and oil and gas flow into the mobile production facility.

Well clean-out and Tubing: The wells are cleaned out to remove excess sand and install the production tubing.

Production Facility Construction (30-45 days per facility)



Production facilities are constructed adjacent to the wells to collect and separate the oil, natural gas, and water that are produced. Facility production is 30-45 days of work, completed in stages over about four months.

Reclaim Well Site (60 days per pad)



Once development phases are complete, the pad is reclaimed to the largest extent possible to match the existing landscape. Each well will produce energy vital to the health and welfare of our communities for decades to come.