



August 29, 2021

Greetings,

We are writing to notify you that Kerr McGee Oil & Gas Onshore, LP, a subsidiary of Occidental, will soon begin developing oil and natural gas wells in your community. We are committed to being good neighbors by providing frequent and transparent information, safeguarding the environment, and protecting the health and safety of employees and communities.

Work activity, location, and schedule

Enclosed, you will find information about the phases of energy development and well locations. Please visit www.occidentalvirtualtour.com or the website for Coloradans for Responsible Energy and Development at www.cred.org for more information on oil and natural gas development. Below is a summary of the planned work and the estimated schedule.

Phase	Work activity	Estimated start	Estimated end
1	Prepare location and install mitigations	Early September 2021	Late September 2021
2	Drill and install surface casing to protect groundwater	October 6, 2021	Mid to late October
3	Drill wells to a depth of more than 7,000 feet and then horizontally for up to 2 miles	Mid-November	End of January
4 - 6	Hydraulic fracturing, facility construction and reclamation.	We will mail another notice before beginning phases 4 through 6.	

Standard practices and mitigation strategies

Our standard practices are aligned with the guidelines of the Colorado Oil and Gas Conservation Commission (COGCC) and the Colorado Department of Public Health and Environment. The development and mitigation techniques for this location have been carefully planned to ensure temporary impacts are minimized as much as possible. Mitigations during development include a robust traffic management plan, installation of sound walls and continuous sound and air monitoring.

Schedule updates and contact information

To sign up for bi-weekly email updates, view the QR code through a smart phone camera or email us for information on how to subscribe. Please reach out to us if you have any questions or concerns related to our operations.

Sincerely,

Stakeholder Relations Team

Hours: Monday - Friday, 7 a.m. - 4 p.m.

Phone: 866.248.9577

Email: ColoradoStakeholder@oxy.com

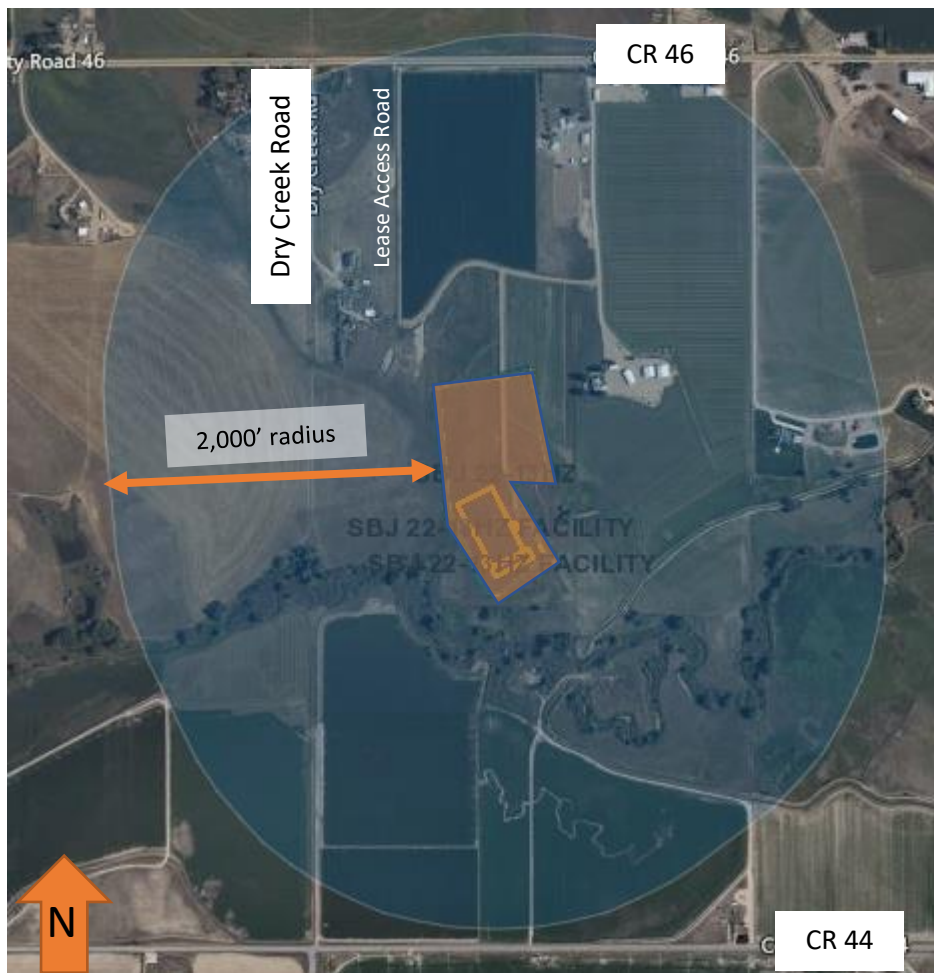
After-Hours and Emergency Line: 970.515.1500



Look at the QR code through a smart phone camera to sign up for email updates

AREA OF OPERATION

SBJ 22-13HZ



Location: South of County Road 46 and East of Dry Creek Road
Unincorporated Weld County

Legal: W1/2 SECTION 13 TOWNSHIP 4 NORTH, RANGE 68 WEST, 6TH P.M

Well description: SBJ 22-13HZ, 13 wells;
Weld County Permit#: 1041WOGLA20-0010;
COGCC Permit ID: Location ID 479198

Weld County Oil and Gas Energy Department: 1301 N. 17th Avenue, Greeley, CO 970.400.3580
Colorado Oil and Gas Conservation Commission: cogcc.state.co.us – 303.894.2100

Phases of Energy Development



1 PAD CONSTRUCTION



- Standard equipment prepares the well site.
- A wall or straw bales may be installed to reduce or minimize noise and light during future operational phases.

DAYS
10 - 20
Per Pad

4 HYDRAULIC FRACTURING



- Hydraulic pumps send water and sand down the wellbore to cause a hairline fracture in the rock so that oil and natural gas can be produced.
- 95% of wells in the U.S. require fracking to produce oil and natural gas.
- For more information, visit cred.org.

DAYS
2 - 4
Per Well

2 SURFACE CASING SET



- A drilling rig begins the underground construction process by installing steel pipe and cement (surface casing) to protect groundwater.
- Surface casing is set below the Fox Hills aquifer, which is ~1,000' below the surface.

DAYS
1 - 2
Per Well

5 PRODUCTION FACILITY CONSTRUCTION



- Production facilities are constructed adjacent to the wells to collect and separate the oil, natural gas and water that are produced.
- A majority of our wells are monitored via remote automation.

DAYS
30 - 45
Per Pad

3 HORIZONTAL DRILLING



- A production rig arrives and drills to a depth of 7,000 to 8,000 feet.
- The horizontal portion of the wellbore can extend more than 2 miles.

DAYS
4 - 10
Per Well

6 RECLAIMED WELL SITE



- Once development phases are complete, the pad is reclaimed to match the existing landscape.
- Each well will produce energy for decades to come.