



KERR-MCGEE OIL & GAS ONSHORE LP
1099 18TH STREET, SUITE 1800
DENVER, CO 80202-1918
P.O. Box 173779
DENVER, CO 80217-3779

May 14, 2021

VIA EMAIL

Jason Maxey
Director, Weld County Oil and Gas Energy Department
1301 North 17th Avenue
Greeley, CO 80631

Re: **Notice of Intent to Submit 1041 Weld County Oil and Gas Location Assessment (WOGLA)**
Oil & Gas Facility Name: GADDIS 3-36HZ
Township 4 North, Range 68 West, 6th P.M.
Section 36: NE ¼ NW ¼
Parcel Number: 106136000028 Weld County, Colorado

Dear Jason Maxey,

Kerr-McGee Oil & Gas Onshore LP (KMOG), is preparing to submit a Weld County Oil and Gas Location Assessment (WOGLA). Per Section 21-5-315.B. of the Weld County Code, a WOGLA notice is required to be sent to the Surface owner, Property Owner(s) whose property boundaries are located within one thousand (1,000) feet or less of the proposed Oil and Gas Location and the principal, senior administrator, or School Governing Body of any School Facility, Future School Facility, or Child Care Center whose properties or jurisdictional boundaries are located within one thousand (1,000) feet of the Oil and Gas Location. The notice will also be sent to the the OGED Director, COGCC Director, CPW, and LGD for any Local Government(s).

The proposed Gaddis 3-36HZ project consists of six (6) horizontal wells and a production facility. The total disturbance area of the pad will be approximately 10.73 acres, but will be reclaimed back to approximately 2.68 acres. Based on pending receipt of required permits, approval of title, and drilling rig availability, we estimate that operations will tentatively commence in the 4th Quarter of 2021.

KMOG will consider all reasonable mitigation measures proposed by the notice recipient to minimize adverse impacts of the proposed oil and gas location. A list of proposed best practices and mitigations is attached.

If you would like to consult with KMOG regarding the details of this application or request a meeting to discuss the proposed oil & gas facility you may contact the Operator or the Weld County Oil & Gas Energy Department. Contact details are listed below. If you have any questions, please contact a member of our Stakeholder Relations Team directly at (866) 248-9577.

Sincerely,

KERR-MCGEE OIL & GAS ONSHORE LP
Stakeholder Relations Team

Contact Details:

Kerr-McGee Oil & Gas OnShore LP
Stakeholder Relations Team
1099 18th Street, Suite 1800
Denver, Colorado 80202
ColoradoStakeholder@oxy.com
866-248-9577

Amanda Petzold
Weld County Oil and Gas Energy Department
1301 N. 17th Ave. Greeley, CO 80631
apetzold@weldgov.com
970-400-3585

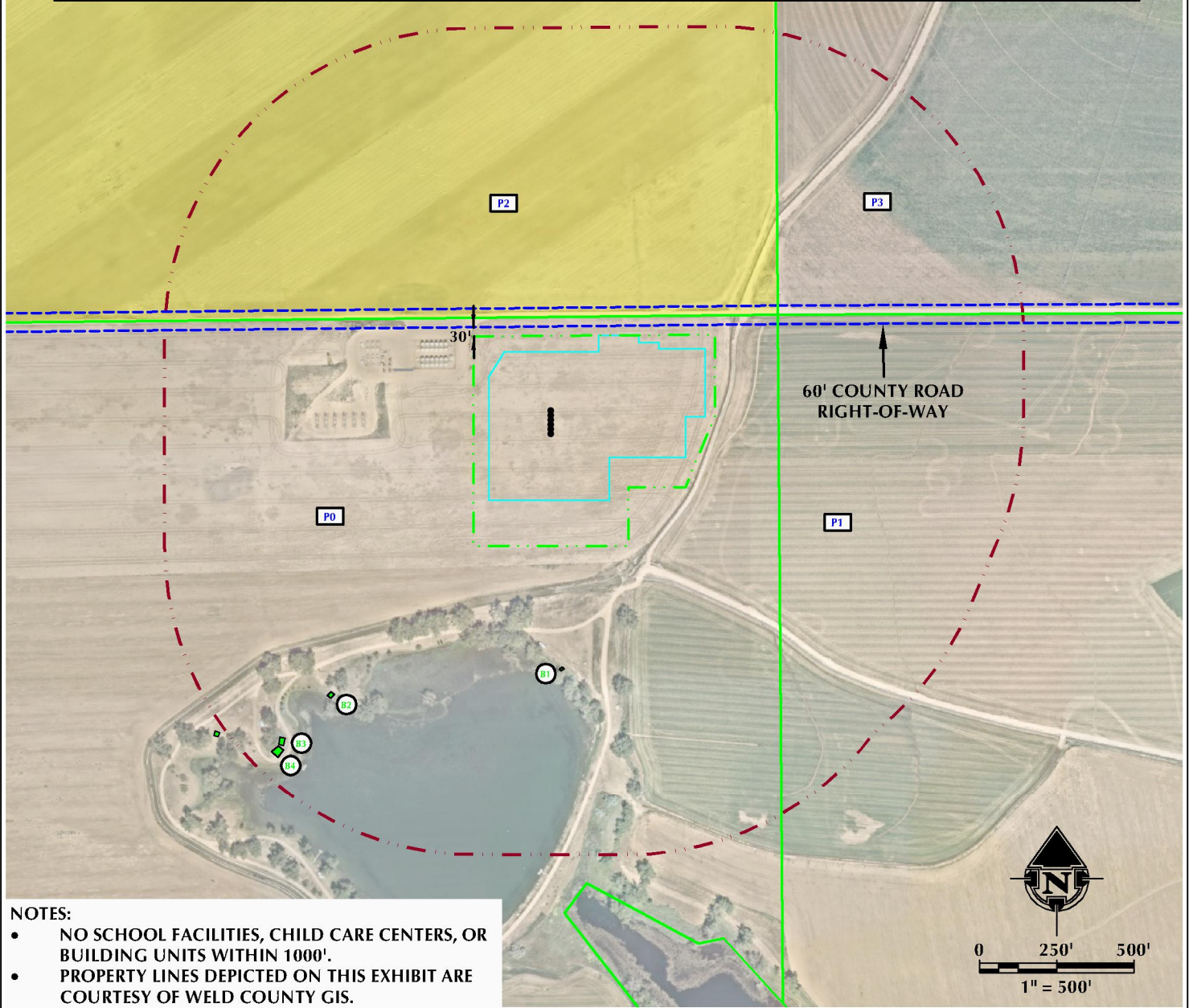
ENCLOSURES: Notification Zone Map
Proposed Haul Route Map
Best Practices & Mitigations

NOTIFICATION ZONE DRAWING (WOGLA)

GADDIS 3-36HZ

NE1/4 NW1/4 SECTION 36, TOWNSHIP 4 NORTH, RANGE 68 WEST, 6TH P.M.

| ID | DISTANCE | PARCEL # | OWNER | MAILING ADDRESS | MAIL CITY | MAIL STATE | MAIL ZIP |
|----|----------|--------------|--------------------------------------|-----------------------|-----------|------------|-----------|
| P0 | - | 106136000028 | GADDIS FAMILY REGISTERED LLLP | 8995 PRAIRIE KNOLL DR | LONGMONT | CO | 805037559 |
| P1 | - | 106136000067 | GADDIS FAMILY REGISTERED LLLP | 8995 PRAIRIE KNOLL DR | LONGMONT | CO | 805037559 |
| P2 | - | 106125000004 | FRONT RANGE INVESTMENT HOLDINGS, LLC | PO BOX 654 | KIRKLAND | WA | 980830654 |
| P3 | - | 106125400002 | VРАНJES PETER JR & MICHELE | 19251 COUNTY ROAD 13 | JOHNSTOWN | CO | 805349305 |



NOTES:

- NO SCHOOL FACILITIES, CHILD CARE CENTERS, OR BUILDING UNITS WITHIN 1000'.
- PROPERTY LINES DEPICTED ON THIS EXHIBIT ARE COURTESY OF WELD COUNTY GIS.

LEGEND

- PROPERTY LINE
- DISTURBANCE BOUNDARY
- WORKING PAD SURFACE
- 1000' BUFFER
- TOWN OF BERTHOUD LIMITS
- SCHOOL PARCEL
- COUNTY ROAD RIGHT-OF-WAY
- EXISTING BUILDINGS
- BUILDING UNIT
- COMMERCIAL/INDUSTRIAL BUILDING UNIT
- BUILDING
- BUILDING UNIT
- PARCEL



609 CONSULTING, LLC
 LOVELAND OFFICE
 6706 North Franklin Avenue
 Loveland, Colorado 80538
 Phone: 970-776-4331

SHERIDAN OFFICE
 1095 Saberton Avenue
 Sheridan, Wyoming 82801
 Phone: 307-674-0609

DATE SURVEYED: 3/10/2020
 DATE: 3/19/21
 DRAFTER: SRS
 REVISED: 5/3/21

DATA SOURCES:
 - AERIAL COURTESY OF ESRI, INC.

PREPARED FOR:

Kerr-McGee Oil & Gas Onshore L.P.

Best practices and mitigations:

We strive to make our activities compatible with the surrounding community and use various mitigation techniques to reduce the temporary impacts associated with development. Our team designed this location after carefully evaluating the area's specific attributes and considering potential impacts to the community. Below is a brief description of the best practices and mitigation measures that will be used at this location.

- **Site selection:** We aim to locate and orient each site, and the associated equipment, in the best way possible to reduce impacts to the community. Our tankless design reduces the footprint of the disturbance area, reducing the overall impact on the community.
- **Reducing Emissions:** In 2020, Occidental set a target to reach net-zero emissions associated with its operations by 2040 and an ambition to reach net-zero emissions with the use of its products by 2050. At this location we are taking steps to reducing emissions by using a tier 4 engine on the drilling rig, which means it meets the strictest emissions requirements, and constructing a tankless facility. The tankless design reduces impacts by eliminating oil storage, which is the largest source of potential emissions. Watch a clip about the tankless design here: https://youtu.be/ONo0_lq1nYE
- **Air Monitoring:** To ensure the wellbeing of those working and living near our operations, we contract with a third-party environmental air quality expert to perform continuous air monitoring during phases 2-4 described on the following page in Phases of Energy Development.
- **Traffic:** We reduce traffic as much as possible. The oil produced from this location will flow off-site through a pipeline, eliminating the need for trucks to transport oil. We transport the water used in hydraulic fracturing through our innovative Water-On-Demand pipeline system. Since its inception in 2012, this technology has enabled us to eliminate more than 25 million miles of truck traffic in Weld County.
- **Noise:** To reduce noise during drilling and hydraulic fracturing, we use a tier 4 drilling rig and a quiet completions fleet. Testing has shown that this equipment is substantially quieter than traditional models. Although operations are conducted 24/7, at night we aim to minimize all non-essential work.
- **Light:** We use Light-emitting Diode (LED) lights strategically oriented away from homes and businesses. LED lights not only use less energy and last longer, they emit light in a specific direction unlike incandescent and CFL bulbs which emit light in all directions. This means our operations are less visible to our neighbors.
- **Odor:** Periodically residents report an oil and gas smell near our operations. These odors are likely associated with the drilling fluid. The Colorado Department of Public Health and Environment conducted testing and determined that the odors from our drilling fluid are not a health-threatening issue.
- **Dust:** Dust suppression will be applied to all dirt access roads as needed.
- **Water quality:** Both prior to, and after drilling and completion operations, we contract with a third-party professional to perform water sampling from water wells near the location. The baseline sampling helps establish existing conditions, and the post-development samples verify our operations are safe.
- **Remote monitoring:** Our Integrated Operations Center (IOC), staffed 24 hours per day, seven days per week, will remotely monitor the wells and facility. This enables us to deploy appropriate resources quickly, efficiently, and to collaborate with local emergency response agencies as necessary. This system also helps reduce traffic.

- **Community Resources:** Our Stakeholder Relations team is available at 866.248.9577 or ColoradoStakeholder@oxy.com Monday through Friday and our 24-hour IOC can be reached at: 970.506.5980.