



July 7, 2022

We are writing to notify you that Kerr McGee Oil & Gas Onshore, LP, a subsidiary of Oxy USA Inc., will soon begin developing oil and natural gas wells within 2,000 feet of your home or property. We are committed to being good neighbors by providing frequent and transparent information, safeguarding the environment, and protecting the health and safety of the communities we live and work in.

Work activity, location, and schedule

Enclosed, you will find information about the phases of energy development and well locations. Please visit our website [OxyColoradoStakeholder.com](http://OxyColoradoStakeholder.com) for more information on oil and natural gas development. Below is a summary of the planned work and the estimated schedule.

Phase	Work activity	Estimated start	Estimated end
1	Prepare location and install mitigations	Early August 2022	Early September 2022
2	Drill and install surface casing to protect groundwater	September 24, 2022	Early June 2022
3	Horizontal drilling	Late October 2022	Mid November 2022
4 - 6	Well completions, facility construction, and reclamation.	We will send additional notices before starting phases 4 through 6.	

[For up-to-date information on timing, please visit oxycoloradostakeholder.com/project-updates](http://oxycoloradostakeholder.com/project-updates)

Standard practices and mitigation strategies

Our standard practices align with the guidelines of Weld County, the Colorado Oil and Gas Conservation Commission (COGCC) and the Colorado Department of Public Health and Environment. In addition, we carefully planned the development and mitigation techniques for this location to ensure the temporary impacts are minimized as much as possible. Mitigations during development include a robust traffic management plan, installation of sound walls, and continuous sound and air monitoring.

To access the most up-to-date information on current projects, please visit the Project Updates tab at [oxycoloradostakeholder.com/project-updates](http://oxycoloradostakeholder.com/project-updates).

Sincerely,

**Oxy Stakeholder Relations**

**Hours:** Monday - Friday, 7 a.m. - 4 p.m.

**Phone:** 866.248.9577

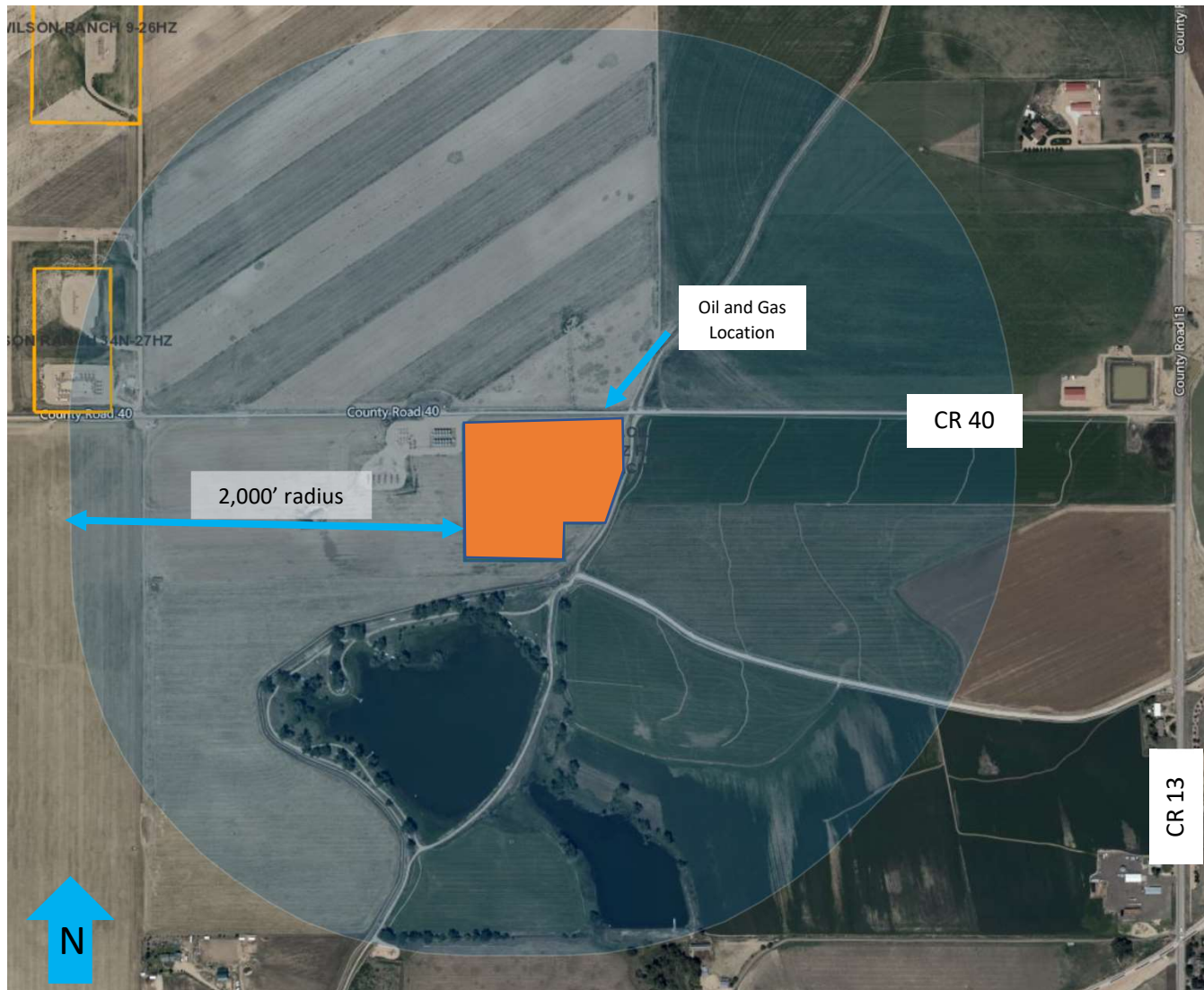
**Email:** [ColoradoStakeholder@oxy.com](mailto:ColoradoStakeholder@oxy.com)

**After-Hours and Emergency Line:** 970.515.1500

## AREA OF OPERATION



### Gaddis 3-36HZ Pad



**Location:** Lat: 40.277409 Long: -104.953063 - **Parcel #** 106136000028

**Cross streets:** WCR 40 and WCR 13

Unincorporated Weld County

**Legal:** NE ¼ NW 1/4 SECTION 36 TOWNSHIP 4 NORTH, RANGE 68 WEST, 6<sup>TH</sup> P.M

**Well description:** Gaddis 3-36 HZ, 6 wells;

**Weld County Permit#:** 1041WOGLA21-0005;

**COGCC Permit ID:** 478972

**Weld County Oil and Gas Energy Department:** Amanda Petzold

1301 N. 17<sup>th</sup> Avenue, Greeley, CO [apetzold@weldcountygov.com](mailto:apetzold@weldcountygov.com) 970.400.3585

**Colorado Oil and Gas Conservation Commission:** [cogcc.state.co.us](http://cogcc.state.co.us) – 303.894.2100

For more information on oil and natural Gas Development and project updates, visit [www.oxycoloradostakeholder.com](http://www.oxycoloradostakeholder.com)



## Phases of Energy Development

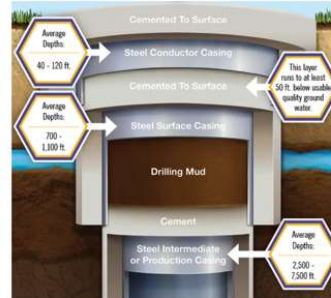
For more information, please see [www.OxyColoradoStakeholder.com/Oil-and-Gas-101](http://www.OxyColoradoStakeholder.com/Oil-and-Gas-101)

### 1 Pad Construction 30-45 days per pad



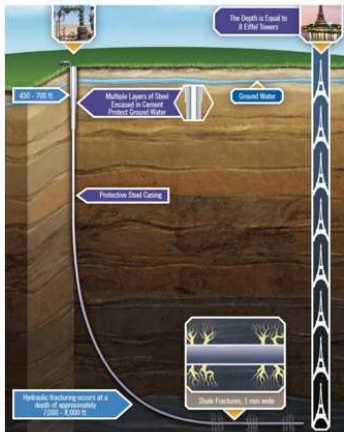
Standard construction equipment prepares the well site. A wall may be installed to reduce or minimize noise and light during development.

### 2 Surface Casing Set 1-2 days per well



A drilling rig begins the underground construction process by installing steel pipe and cement (surface casing) to protect groundwater. Surface casing is set at least 50' below the aquifer, which is typically about 1,000' below the surface.

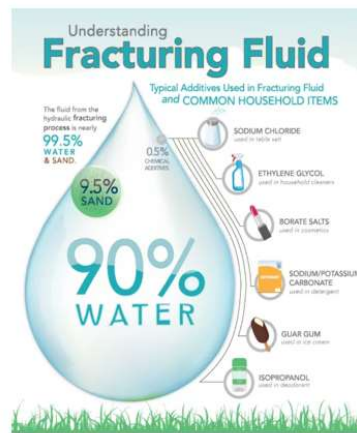
### 3 Horizontal Drilling 4-6 days per well



A production rig arrives and drills to a depth of 7,000 to 8,000 feet. The horizontal portion of the wellbore can extend more than two miles.

Additional layers of protective steel casing and cement are installed.

### 4 Well Completions: 3 Components 6-9 days per well



**Hydraulic Fracturing:** a safe, highly engineered technology developed in the 1940s. Fracturing fluid is pumped under high pressure down the wellbore to create hairline fractures in the rocks over a mile below the earth's surface.

**Flowback:** After fracturing, the wells are opened and oil and gas flows into the mobile production facility.

**Well clean-out and Tubing:** We clean-out the wells to remove excess sand and install the production tubing.

### 5 Production Facility Construction 30-45 days per facility



Production facilities are constructed adjacent to the wells to collect and separate the oil, natural gas and water that are produced. Facility production is 30-45 days of work done in stages over a period of about four months.

### 6 Reclaim Well Site 30 days per pad



Once development phases are complete, the pad is reclaimed to the largest extent possible to match the existing landscape. Each well will produce energy vital to the health and welfare of our communities or decades to come.